

QF-Test License Server

Version 9.0.3

Quality First Software GmbH¹

Copyright © 2014-2025 Quality First Software GmbH

April 29, 2025

¹<https://www.qftest.com>

Contents

1	Quickstart	1
2	License server installation	3
2.1	Prerequisites	3
2.2	License files	3
3	QF-Test startup options for running or administrating the license server	5
3.1	Call syntax	5
3.1.1	Server side operations	5
3.1.2	Client side operations	6
3.2	Command line arguments	8
3.2.1	Arguments for the starter script	8
3.2.2	Arguments for the Java VM	8
3.2.3	Arguments for QF-Test	8
4	Interactive license server administration	11
4.1	Opening the administration window	11
4.2	Components of the administration window	12
4.2.1	Menu 'File'	12
4.2.2	Menu 'View'	12
4.2.3	Menu 'Extras'	13
4.2.4	Update every	13
4.2.5	'Update' button	13
4.2.6	Individual license data	13
4.3	Tables	14

CONTENTS

ii

4.3.1	Overview	14
4.3.2	Individual license usage	15
4.4	Update license server	16
A	Third party software	19

List of Figures

4.1	Login dialog	11
4.2	Administration window	12
4.3	Current license usage with 'Show engines' activated	14
4.4	Update dialog	16
4.5	Update dialog with new license	17
4.6	License update confirmation	18

Chapter 1

Quickstart

This chapter provides short explanations and examples for quickly setting up a typical QF-Test license server. The next two explain the usage of the command line interface in more detail and can be used as a reference.

The last chapter shows you how to administer the license server via the graphical user interface.

Inform Quality First Software GmbH about server data for license generation

Define a dedicated host for the license server and a dedicated port on that machine for this service. Provide this information to Quality First Software GmbH for setting up the license files and make sure that firewalls are configured so that client machines can reach the host under the given name or IP address at the given port ([section 2.2^{\(3\)}](#)).

Install QF-Test

Unpack the QF-Test archive (.tar.gz for Linux or -sfx.exe for Windows) in a convenient location. The directory named `qftest` is called QF-Test's root directory. It contains a version-specific directory named `qftest-x.y.z`. QF-Test needs write access to its root directory to store version-independent files there. When upgrading to a newer version, install to the same place in order to reuse those files ([section 2.1^{\(3\)}](#)).

License files

Save the server and client license files named `license.server` and `license`, provided by Quality First Software GmbH, to QF-Test's root directory ([section 2.2^{\(3\)}](#)).

Set the license server's password

The default password for the QF-Test license server is `secret`. It is a good idea to change it before starting the license server for the first time by defining a

password for the license server administrator named `admin` and setting the administrator password by executing

```
qftest -batch(8) -licenseserver(9)  
-licenseserver-setpwd <user>=<password>(9)
```

for `<user>` `admin`.

You can always run QF-Test directly from its `bin` directory by specifying the full path instead of just `qftest`.

Start the license server

Then you can then run the license server via

```
qftest -batch(8) -licenseserver(9)
```

Distribute the client license

Provide the client license file called `license` to QF-Test users that should get their license from the license server. The file should be saved in QF-Test's root directory on the client.

Measure license usage

Current license usage can be monitored on the server machine or any client machine with a QF-Test installation and the client license. Either start the license server admin GUI described in [chapter 4^{\(11\)}](#) with

```
qftest -licenseserver-admin(9)
```

and login as user `admin` with the password you defined or dump the current license use to stdout with one of the following commands:

```
qftest -batch(8) [-licenseserver-password <password>(9)  
-licenseserver-dump(9)
```

```
qftest -batch(8) [-licenseserver-password <password>(9)  
-licenseserver-dumptotal(9)
```

Save the license server's password

You can omit specifying `-licenseserver-password <password>(9)` in the above commands by logging in once via the admin GUI and checking "Remember password" or by saving the administrator password for client side use via

```
qftest -batch(8) -licenseserver-setpwd <user>=<password>(9)
```

Stop the license server

To stop the license server, either kill its process or run

```
qftest -batch(8) -licenseserver-shutdown(10)
```

Chapter 2

License server installation

2.1 Prerequisites

Note

Please always run the QF-Test license server with its own Java. If you need to minimize space, e.g. for running the server inside a Docker container together with other applications, a current version of Java 8 or Java 17 should also work.

The QF-Test license server functionality is currently part of the main QF-Test installation and not available as a separate package. Thus the installation is identical to the installation of QF-Test itself, documented in the QF-Test manual, chapter 1.

It is possible, but not strictly necessary, to run the license server under a dedicated user account. For security reasons the "root" or "Administrator" accounts should not be used.

2.2 License files

Besides the usual information about numbers and kinds of licenses and GUI engines, two additional parameters are required for server and client licenses: The hostname or IP address of the license server and a dedicated port number reserved for the license server on this host. These must be provided to QFS for creating the server and client license files, and the server will be limited to running on the specified host and port.

The QF-Test license server requires a special server license that should be saved under the name "license.server" in the system directory of QF-Test. On Windows, depending on the type of installation, this is %PROGRAMDATA%\QFS\QF-Test or the root directory of your QF-Test installation as it is on Linux. This license cannot be used on any other machine.

A matching client license is needed to administrate the server. The client license is similar to a normal QF-Test license and should be saved in the QF-Test system directory

and named `license` with no extension.

QF-Test instances that need to get their license from the server should use the client license in place of their normal license. One of the great advantages of the license server is that the client license is constant and does not need to be updated when the QF-Test version changes or additional instances are added to the license.

It is always possible to use a specific license via the command line argument `-license <file>`⁽⁹⁾.

Chapter 3

QF-Test startup options for running or administering the license server

5.2+

For maximum flexibility the names of all QF-Test arguments are case-insensitive and embedded '-', '_', '.' and ':' characters are ignored, so `-licenseserver.logfile` is equivalent to `-licenseserverLogfile` or `-licenseserver-logfile`. The latter is the officially documented form because it avoids conflicts with Windows PowerShell.

Windows

The program `qftest.exe` is a Windows GUI application. When started from a command shell, it will not wait for QF-Test to terminate but return immediately and you won't see any output from QF-Test in the console window. For running the QF-Test license server as a Windows service or autostart program this is fine. For running the license server from a Windows command shell you may prefer to utilize the `qftestc.exe` console application. It waits for QF-Test to terminate and output will be displayed in the console window. Apart from that, everything said about `qftest.exe` in this chapter holds true for `qftestc.exe` too.

3.1 Call syntax

3.1.1 Server side operations

The following commands apply to the license server. They must be run on the license server machine and require a server license.

Starting the license server

The license server is started as follows:

```
qftest -batch(8) [-dbg(8)] [-java <executable>(8)]  
[-noconsole(8)] [-J<java argument>]*
```

```

[-license <file>(9)] [-licenseserver-logfile <file>(9)]
[-licenseserver-verbose <level>(10)]
[-option <name>=<value>(10)] [-options <file>(10)]
-licenseserver(9)

```

Setting the administrator password for the license server

To set the administrator password for the license server on the server side, use the following syntax for <user> admin:

```

qftest -batch(8) [-dbg(8)] [-java <executable>(8)]
[-noconsole(8)] [-J<java argument>]*
[-license <file>(9)] [-licenseserver-logfile <file>(9)]
[-licenseserver-verbose <level>(10)]
[-option <name>=<value>(10)] [-options <file>(10)]
-licenseserver(9) -licenseserver-setpwd <user>=<password>(9)

```

3.1.2 Client side operations

The following commands can be executed with QF-Test on either the license server machine or a client machine. They require a client license matching the server.

Stopping the license server

To cleanly shut down the license server, use the following syntax:

```

qftest -batch(8) [-dbg(8)] [-java <executable>(8)]
[-noconsole(8)] [-J<java argument>]* [-license <file>(9)]
[-option <name>=<value>(10)] [-options <file>(10)]
[-licenseserver-password <password>(9)]
-licenseserver-shutdown(10)

```

Saving the user's password for the license server

By running this command once, the administrator password will be saved for the current user so that the command line argument `-licenseserver-password <password>(9)` can be omitted in future calls:

```

qftest -batch(8) [-dbg(8)] [-java <executable>(8)]
[-noconsole(8)] [-J<java argument>]* [-license <file>(9)]
[-option <name>=<value>(10)] [-options <file>(10)]
-licenseserver-setpwd <user>=<password>(9)

```

Currently the only username supported is admin.

Getting detailed information about the current license usage

You can get a list of all currently used licenses with the following command:

```

qftest -batch(8) [-dbg(8)] [-java <executable>(8)]
[-noconsole(8)] [-J<java argument>]* [-license <file>(9)]
[-option <name>=<value>(10)] [-options <file>(10)]
[-licenseserver-password <password>(9)]
-licenseserver-dump(9)

```

The result is printed to standard output in comma-separated values (CSV) format including a header line.

Getting summary information about the current license usage

You can get a summary of the currently used licenses with the following command:

```

qftest -batch(8) [-dbg(8)] [-java <executable>(8)]
[-noconsole(8)] [-J<java argument>]* [-license <file>(9)]
[-option <name>=<value>(10)] [-options <file>(10)]
[-licenseserver-password <password>(9)]
-licenseserver-dumptotal(9)

```

The result is printed to standard output in comma-separated values (CSV) format including a header line. The lines of data show the current license usage, the remaining unused licenses and the total available licenses.

Getting summary information about peak license usage

The QF-Test license server internally tracks peak usage. You can get the values with the following command:

```

qftest -batch(8) [-dbg(8)] [-java <executable>(8)]
[-noconsole(8)] [-J<java argument>]* [-license <file>(9)]
[-option <name>=<value>(10)] [-options <file>(10)]
[-licenseserver-password <password>(9)]
[-licenseserver-verbose <level>(10)]
-licenseserver-dumppeak(9)

```

The result is printed to standard output. If the log level -licenseserver-verbose <level>⁽¹⁰⁾ is VERBOSE or higher, the time at which the peak was reached is printed. If it is DETAIL, the individual leases causing the peak are listed as well.

Interactive license server administration

This command launches a dedicated license server administration GUI for interactive use. You can also open this window from an interactive QF-Test instance via the menu **Extras→Administrate license server**.

```

qftest [-dbg(8)] [-java <executable>(8)] [-J<java argument>]*
[-license <file>(9)] [-option <name>=<value>(10)]
[-options <file>(10)] -licenseserver-admin(9)

```

3.2 Command line arguments

Command line arguments for QF-Test fall in three categories.

3.2.1 Arguments for the starter script

These arguments are evaluated directly by the `qftest` shell script or executable and override settings determined during installation. Under Linux these settings are stored in the file `launcher.cfg` in QF-Test's root directory, under Windows they are stored in the registry.

-batch

Run QF-Test in batch mode. This is a required argument for the license server.

-dbg

Turn on debugging output for the starter script. The same effect is achieved by setting the environment variable `QFTEST_DEBUG` to a non-empty value. On Windows this causes QF-Test to open a console window to display the output that would otherwise be invisible unless the argument `-noconsole(8)` is also given.

-java <executable>

The Java executable used to run QF-Test. The default is `java` on Linux and `javaw.exe` on Windows, unless a different value was set during installation.

-noconsole (Windows only)

On Windows this argument suppresses the console window that would otherwise be opened in case `-dbg(8)` is specified.

3.2.2 Arguments for the Java VM

You can pass arguments to the Java VM through the starter script by prepending them with `-J`, e.g. `-J-Duser.language=en` to set a system property.

3.2.3 Arguments for QF-Test

The rest of the arguments are handled by QF-Test itself when it is executed by the Java virtual machine. These arguments can also be placed in a file using the syntax `<name>=<value>` for arguments with parameters or `<name>=true` or `<name>=false` to turn a simple argument on or off. By default this file is called `qftest.options`, located in the `bin` directory of QF-Test and used only for internal logging purposes. If you

change anything in this file, you can move it to QF-Test's root directory so your changes will still apply after upgrading. Alternatively you can use the `-options <file>`⁽¹⁰⁾ argument to specify a different file. Arguments given on the command line override arguments from an option file except for those which can be given multiple times. In the latter case the arguments are merged.

-license <file>

Set the location of the license file.

-licenseserver

Start QF-Test in license server mode.

-licenseserver-admin

Open the license server administration GUI.

-licenseserver-dump

Print detailed information about the currently used licenses.

-licenseserver-dumptotal

Print summary information about the currently used licenses.

-licenseserver-dumppeak

Print information about peak license usage. If the log level defined with `-licenseserver-verbose <level>`⁽¹⁰⁾ is `DETAIL`, also print the individual leases that caused the peak usage.

-licenseserver-logfile <file>

Write log messages to the specified file. The default log file is `licenseserver.log` in the `log` directory of QF-Test, either under QF-Test's system directory or the user directory. To suppress logging, use the argument with an empty value in the form `-licenseserver.logfile=`.

-licenseserver-password <password>

The password for connecting to the license server as the user `admin`. Can be omitted if the password was previously saved for the current user during interactive use or via the command line argument `-licenseserver-setpwd <user>=<password>`⁽⁹⁾.

-licenseserver-setpwd <user>=<password>

Set a password for license server administration. Currently only one user named `admin` is supported. When run in license server mode, i.e. in combination with `-licenseserver`⁽⁹⁾ the command changes the password for the license server. In client mode it saves the password for the current user so that no login is required when opening the license server administration window and no password must be specified via `-licenseserver-password <password>`⁽⁹⁾ when performing client-side batch operations.

-licenseserver-shutdown

Cleanly shut down the license server.

-licenseserver-verbose <level>

Set the log level for the license server. On the server side it determines how much detail is written to the log file specified with `-licenseserver-logfile <file>`⁽⁹⁾. On the client side it determines how much detail to print for commands like `-licenseserver-dumppeak`⁽⁹⁾. Supported values are numbers from 0 to 4 or the respective constants NOTHING, ERRORS, TERSE, VERBOSE, DETAIL. The default value is TERSE.

-nomessagewindow

In case of a fatal error in batch mode QF-Test prints an error message to the console and for improved visibility also brings up an error dialog for about 30 seconds. That dialog can be suppressed with the help of this argument.

-option <name>=<value>

Specifies options. `-option <name>=<value>` sets a value of the option with a name <name> to <value>. This argument can be given more than once to set several options.

-options <file>

Override the location of the file used to specify additional command line arguments. This argument can be given more than once to use several sources of command line arguments.

-version

Print version information and exit.

Chapter 4

Interactive license server administration

4.1 Opening the administration window

You can open the administration window in one of the two ways:

Start via command line

```
qftest -licenseserver-admin(9)
```

Start via QF-Test client

You can start the GUI administration at a client that gets its license from the license server via the menu item Extras → License server administration....

When the login dialog appears you can enter the user name (currently 'admin' only) and the password. Additionally you can check the box whether the password should be saved so that the login dialog will not appear again next time.

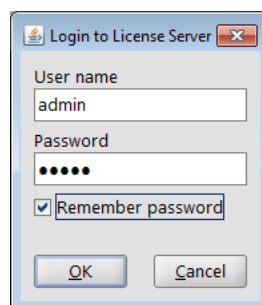


Figure 4.1: Login dialog

The administration windows consists of a menu bar, an overview and a table showing the individual current or peak license usage. You can configure the GUI to show a status line as well.

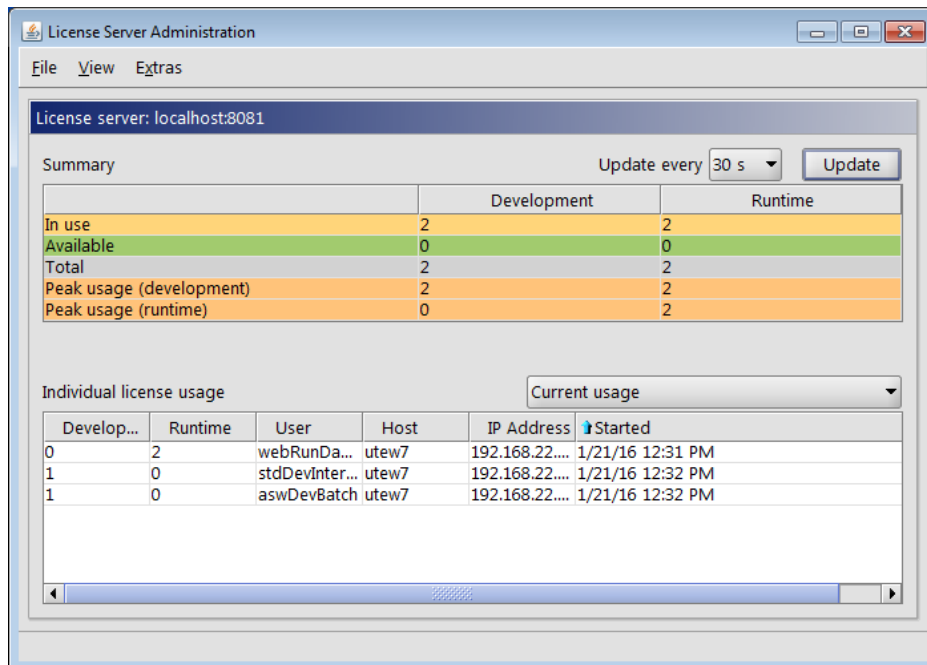


Figure 4.2: Administration window

4.2 Components of the administration window

4.2.1 Menu 'File'

Menu item 'Close window'

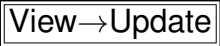
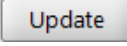
Closes the administration window.

4.2.2 Menu 'View'

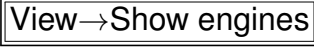
Menu item 'Show status line'

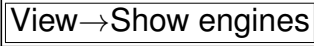
You can activate or deactivate the menu item by clicking it. When it is ticked, i.e. activated, you will see an additional line for status information at the bottom part of the window.

Menu item 'Update'

 requests the current license usage from the license server and updates the display. Alternatively you could press the  button.

Menu item 'Show engines'

You can activate or deactivate the menu item by clicking it. When  is not ticked, i.e. deactivated, only the sums of the developer and runtime licenses are displayed.

When  is ticked, the licenses shown in the overview and individual licenses tables are also listed per engine. This comes in handy when you have a server license valid for different numbers of licenses for the different types of engines. The image [Current license usage with 'Show engines' activated^{\(14\)}](#) at the beginning of the chapter [Tables^{\(14\)}](#) shows an example.

4.2.3 Menu 'Extras'

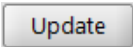
Menu item 'Update server license'

You can update the server license currently in use via this menu item. The update process is described in detail in [section 4.4^{\(16\)}](#).

4.2.4 Update every ...

In the drop down list you can specify the interval (from 5 sec to 5 min) for requesting license usage data from the license server and an update of the display.

4.2.5 'Update' button

 requests the current license usage from the license server and updates the display.

4.2.6 Individual license data

Above the table [Individual license usage^{\(15\)}](#) you will find a drop down list, where you can choose which data the table should display.

Current usage

Data showing the license usage of the individual QF-Test clients currently started.

Peak usage (development)

Data showing the license usage of the individual clients at the time of maximum use of developer licenses since the license server was started last.

Peak usage (runtime)

Data showing the license usage of the individual clients at the time of maximum use of runtime licenses since the license server was started last.

4.3 Tables

The screenshot shows the 'License Server Administration' window for 'localhost:8081'. It features a 'Summary' table and an 'Individual license usage' table. The 'Summary' table has columns for Development, AWT, JavaFX, SWT, Web, Runtime, AWT/Rt, JavaFX/Rt, SWT/Rt, and Web/Rt. The 'Individual license usage' table has columns for Development, AWT, JavaFX, SWT, Web, Runtime, AWT/Rt, JavaFX/Rt, SWT/Rt, Web/Rt, User, Host, IP Address, and Started.

License server: localhost:8081													
Summary													
	Development	AWT	JavaFX	SWT	Web	Runtime	AWT/Rt	JavaFX/Rt	SWT/Rt	Web/Rt			
In use	2	2	1	2	2	2	0	0	0	2			
Available	0	0	0	0	0	0	2	1	2	0			
Total	2	2	1	2	2	2	2	1	2	2			
Peak usage (development)	2	2	1	2	2	2	0	0	0	2			
Peak usage (runtime)	0	0	0	0	0	2	0	0	0	2			

Individual license usage													
Current usage													
Develop...	AWT	JavaFX	SWT	Web	Runtime	AWT/Rt	JavaFX/Rt	SWT/Rt	Web/Rt	User	Host	IP Address	Started
0	0	0	0	0	2	0	0	0	2	webRunDa...	utew7	192.168.22...	1/21/16 12:31 PM
1	1	1	1	1	0	0	0	0	0	stdDevInter...	utew7	192.168.22...	1/21/16 12:32 PM
1	1	0	1	1	0	0	0	0	0	aswDevBatch	utew7	192.168.22...	1/21/16 12:32 PM

Figure 4.3: Current license usage with 'Show engines' activated

4.3.1 Overview

In use

Number of licenses of the respective type (development/runtime) currently in use by QF-Test clients.

Available

This table row shows the number of development and runtime licenses currently available, including engine information if the menu option is set accordingly.

The image above shows an example with two developer licenses, one of which is assigned to a QF-Test client making use of all the engines available and the other to a QF-Test client using all engines except Java FX. The license structure of the example allows only one instance of QF-Test to work with a Java FX engine. The license structure for the runtime licenses is the same. However, the two runtime licenses are used by a daemon running two QF-Test instances using only the web engine.

Total

This table row shows the total number of development and runtime licenses available. When the menu option is set accordingly it also shows the respective numbers for the single engines.

Peak usage (development)

Total license usage at the time of maximum usage of development licenses since the last restart of the license server.

Peak (runtime)

Total license usage at the time of maximum usage of runtime licenses since the last restart of the license server.

4.3.2 Individual license usage

You can specify the kind of individual license data shown by selecting the respective option from the drop-down list Individual license data⁽¹³⁾ above the table. The table columns provide the following information:

Development / Runtime

The number of used development, respectively runtime licenses used by each connected QF-Test client.

User

The name of the user running the QF-Test client.

Host

The name of the host on which the QF-Test client was started.

IP Address

The client's IP address.

Started

The time when the QF-Test Client was started.

AWT / JavaFX / SWT / Web

Number of development licenses used for the respective engine by the QF-Test client.

You can show / hide these columns via the menu item **View→Show engines**.

AWT/Rt / JavaFX/Rt / SWT/Rt / Web/Rt

Number of runtime licenses used for the respective engine by the QF-Test client.

You can show / hide these columns via the menu item **View→Show engines**.

4.4 Update license server

The server license can be updated interactively via the administration window. This is done by selecting **Extras→Update server license**. The following dialog appears:

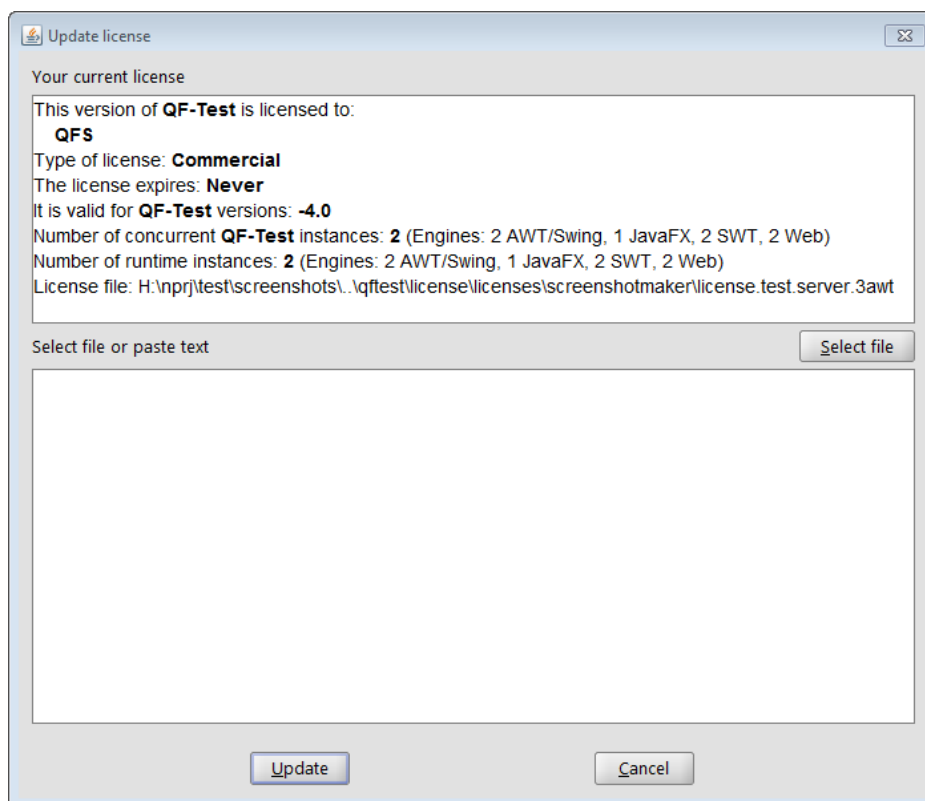


Figure 4.4: Update dialog

The top part of the dialog shows the server license currently in use.

In the bottom text field you can either paste the text of the license provided by Quality First Software GmbH or enter it automatically by selecting the license (update) file via the "Select file" button.

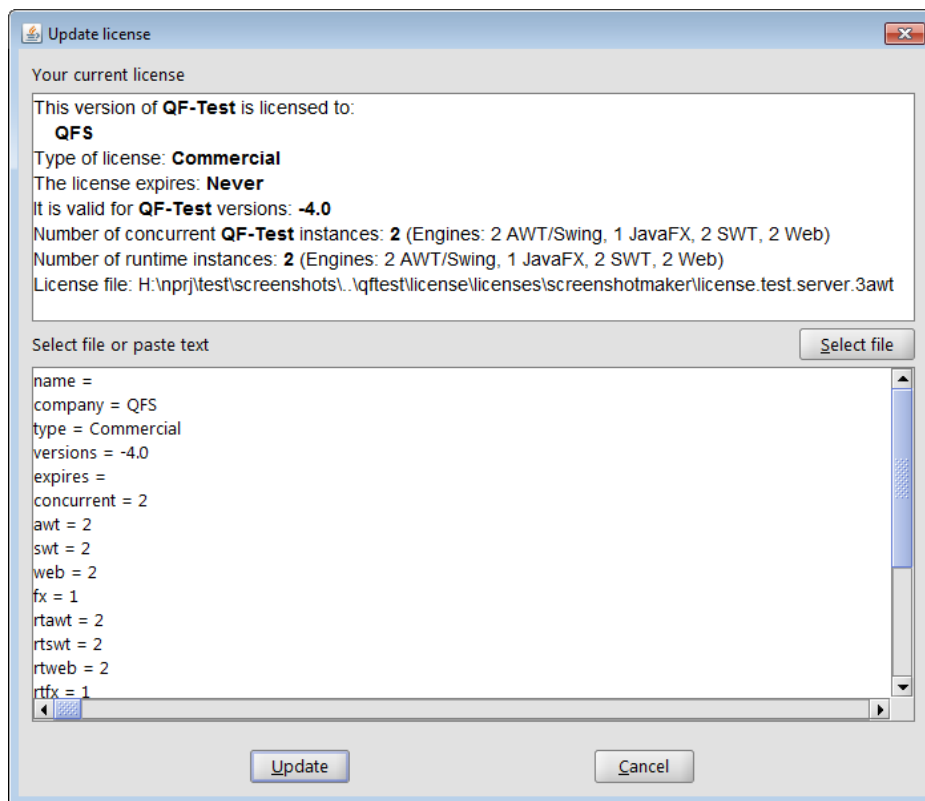


Figure 4.5: Update dialog with new license

When the license data has been entered into the bottom text field you can press the "Update" button. A message will come up informing you that the license update was successful.

The license server is updated while it is running. It does not have to be restarted for the new license to become active. QF-Test clients already connected are not affected by the license update. Newly started clients will run with the updated license.

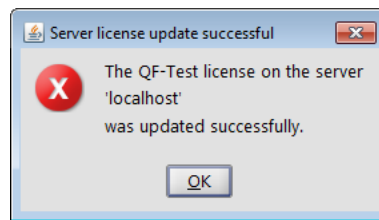


Figure 4.6: License update confirmation

The old license file gets backed up with the ending '.old' before the update is performed. The new license data are written to the current license file specified via `-license <file>`⁽⁹⁾.

After the update the license update file provided by Quality First Software GmbH is no longer needed.

Appendix A

Third party software

QF-Test license server makes use of the following software:

Bean Scripting Framework (BSF)

Copyright © 1999 International Business Machines Corporation.

See the license `doc/licenses/bsf`

URL: <http://www.alphaworks.ibm.com/tech/bsf>

Cryptix library

Copyright © 1995, 1996, 1997, 1998, 1999, 2000 The Cryptix Foundation Limited. All rights reserved.

See the license `doc/licenses/cryptix`

URL: <http://www.cryptix.org>

Java Runtime Environment

Distributed under the Oracle Binary Code License Agreement for the Java SE Platform Products and JavaFX (see `doc/licenses/oracle-jre`).

URL:

<http://www.oracle.com/technetwork/java/javase/overview/index.html>

JGoodies Looks

Copyright © 2001-2005 JGoodies Karsten Lentzsch. All rights reserved.

See the license `doc/licenses/jgoodies-looks`

URL: <http://www.jgoodies.com>

JIDE Common Layer

Copyright © 2002 - 2009 JIDE Software, Inc, all rights reserved.

Distributed under the GNU General Public License (see `doc/licenses/GPL`) with Classpath Exception (see `doc/licenses/Classpath`).

URL: <http://www.jidesoft.com/products/oss.htm>

Netty

Copyright © 2009 Red Hat, Inc.
Distributed under the Apache Licence, Version 2.0 (see
doc/licenses/apache-2.0).
URL: <http://netty.io>

TrueZIP Virtual File System API

Copyright © 2005-2007 Schlichtherle IT Services.
Distributed under the Apache Licence, Version 2.0 (see
doc/licenses/apache-2.0).
URL: <http://truezip.dev.java.net>